

For the Installation of KCIDE Software, you have to do the following 5 steps.

Step 1: Unzip the files from the downloaded zip file

Step 2: OrCad 10.5 Installation

Step 3: Installation of KCIDE Software

Step 4: Register DLL's

Step 5: File Association

Step 6: Install solution base.

Step 1: Unzip the files from the downloaded zip file

Extract all files in the downloaded file, KCIDE.zip, onto a local folder, e.g., c:\temp.

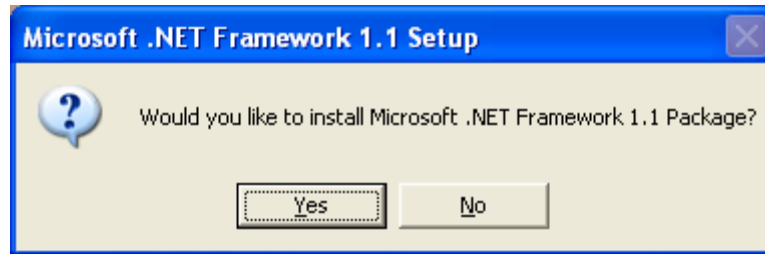
This folder is referred to as the Setup Folder in this guide.

Step 2: Orcad 10.5 Installation - KCIDE software works with Orcad 10.5 Version only. To Install Orcad 10.5 Student Version Follow the steps given below.

1. In the Setup Folder, double click the OrCAD setup file, OrCAD10.5_Demo.exe
2. Follow the setup instructions to install.

Step- 3: Installation of KCIDE Software

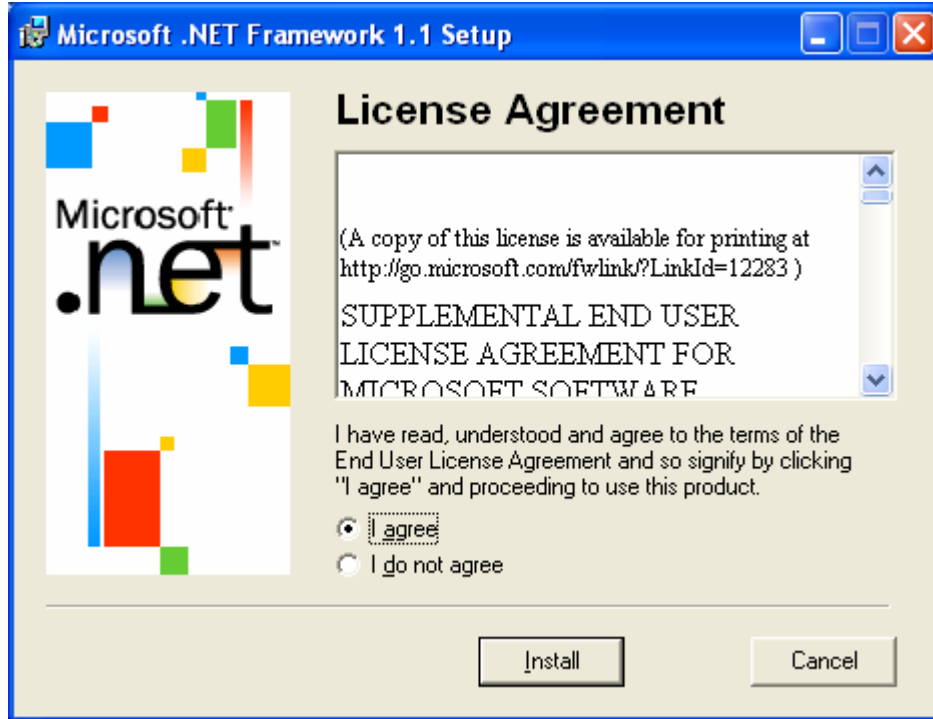
1. In the Setup Folder, double click the KCIDE.msi file. It will start KCIDE installation.
2. If your system does not has Microsoft .NET Framework 1.1 Package, it will ask would you like to install Microsoft .NET Framework 1.1 Package? Click YES. If your system has Microsoft .NET Framework 1.1 Package then it will skip Steps through 3 to 5 and go to step 6 directly.



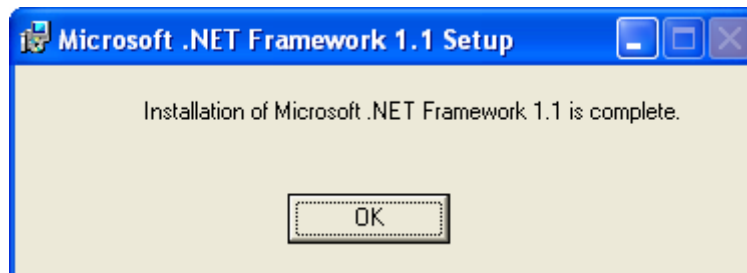
3. You will get License Agreement for .net framework.



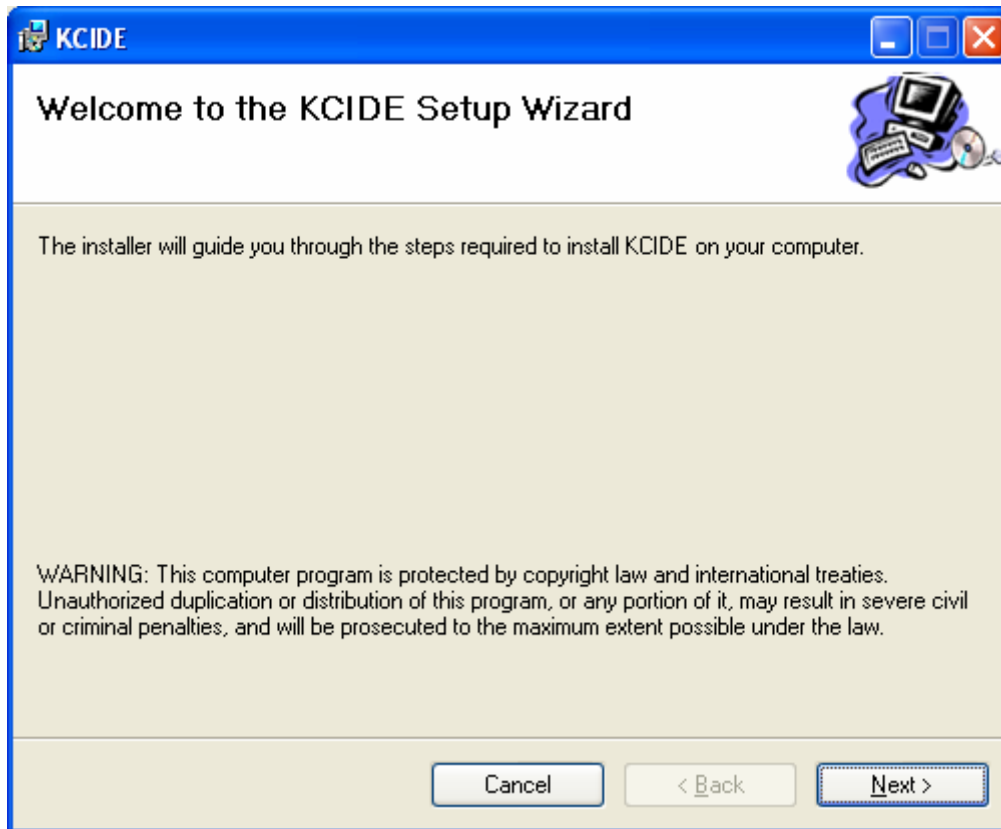
4. Click I agree radio button and then click INSTALL button



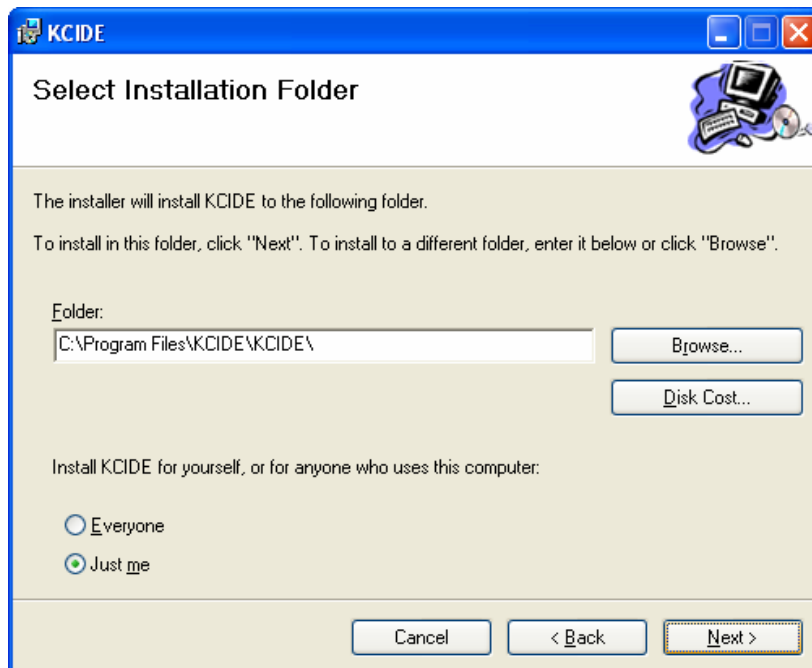
5. You will get a Message that Installation of Microsoft .NET Framework 1.1 is complete. Click OK



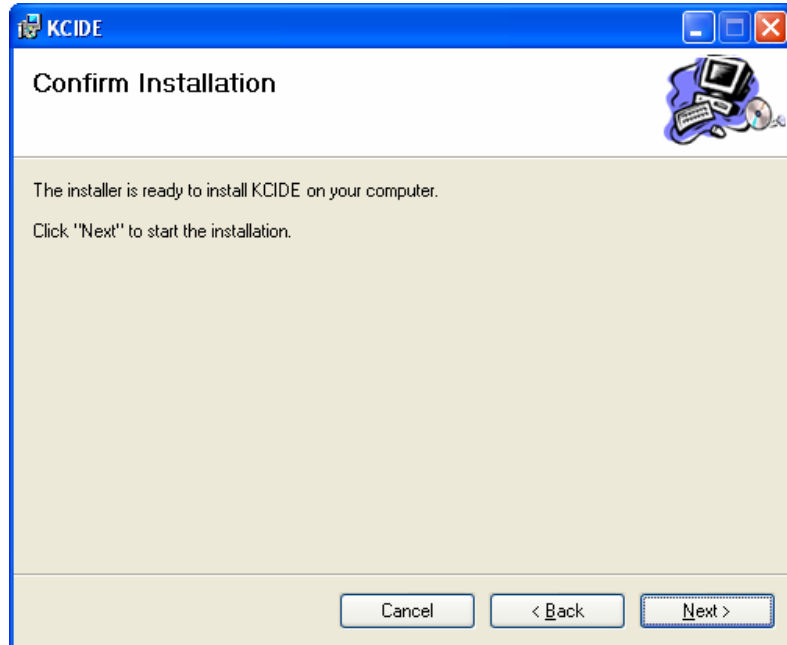
6. Now you will be prompted with the Welcome to KCIDE Setup Wizard. Click Next to Continue.



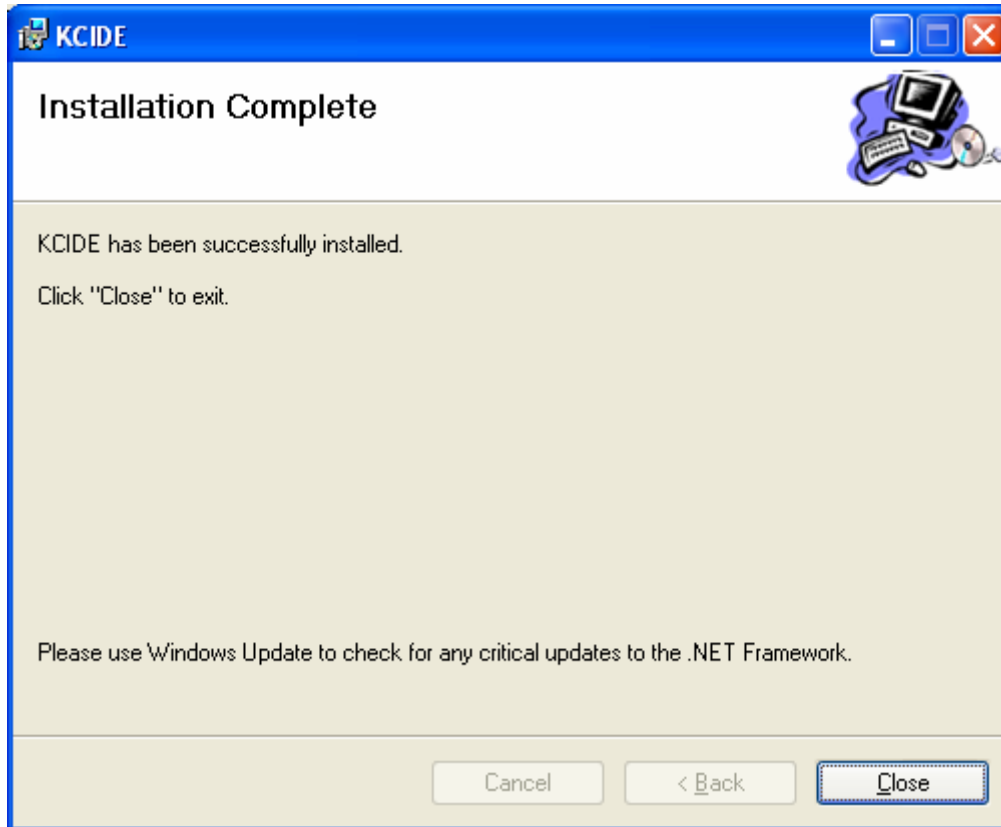
7. You will be asked to select the installation folder. The setup will point to Program files of your system automatically as shown below. If you want to install IDE in program files click Next else browse for the installation folder and click OK button.



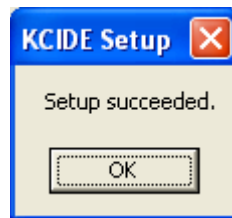
8. The installation will ask for conformation as shown below. Click Next to install



9. The installation will now show the installation complete window as shown below. Click Close to exit the Setup Wizard



10. Installation wizard will show a message box called installation succeeded. Click OK



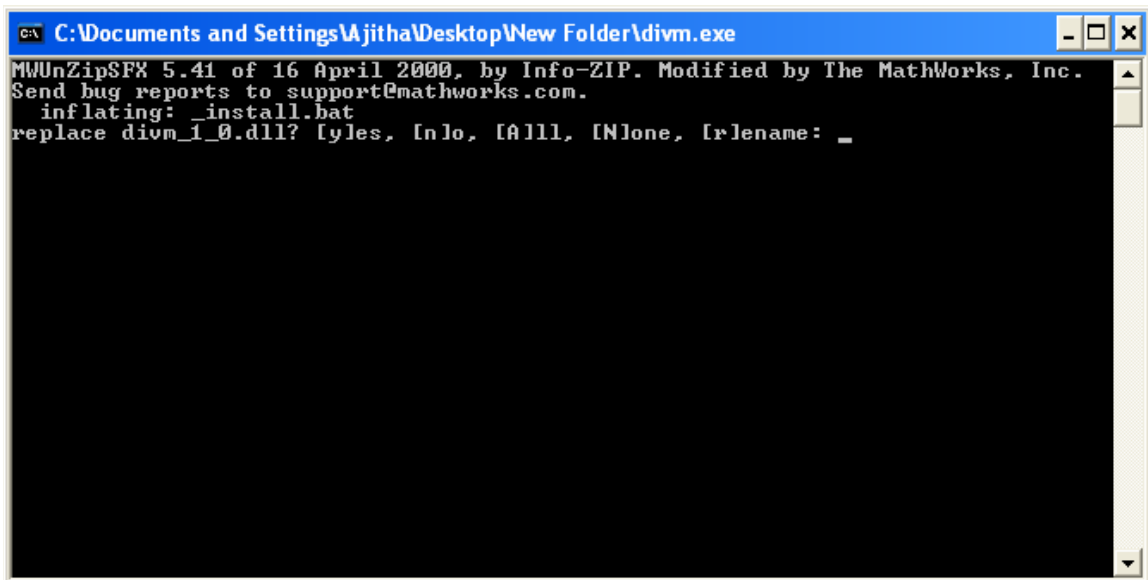
11. You can see a shortcut as shown below on the systems desktop.



Step4: Register DLL's

1. After the completion of the Step 3, go to the installation folder. The default installation folder is C:\Program Files\csu\KCIDE\.
2. Double click the file divm.exe.
3. When a command window opens like the one shown below press SHIFT key and A together and then press ENTER.

Note: Make sure that divm.ctf is in same folder as of divm.dll while extracting divm.dll.



3. When the registration of DLL succeeds, we will get as message box shown below



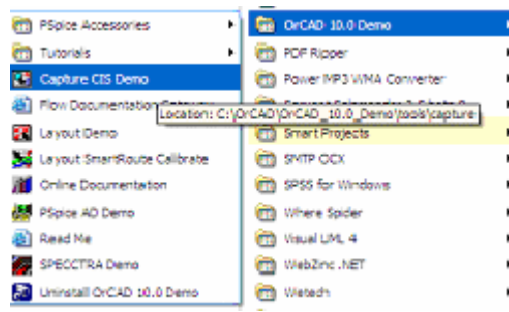
4. Register the MWComUtil library at the DOS command prompt C:\ with the command

mwregsvr mwcomutil.dll

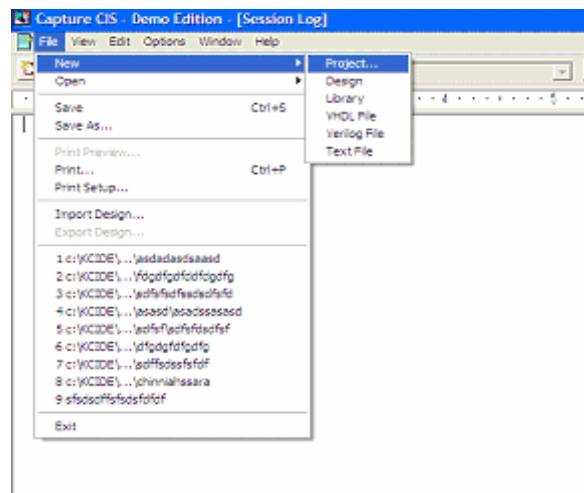
Step-5: File Association

After Registration, file association step has to be done to make the software work.

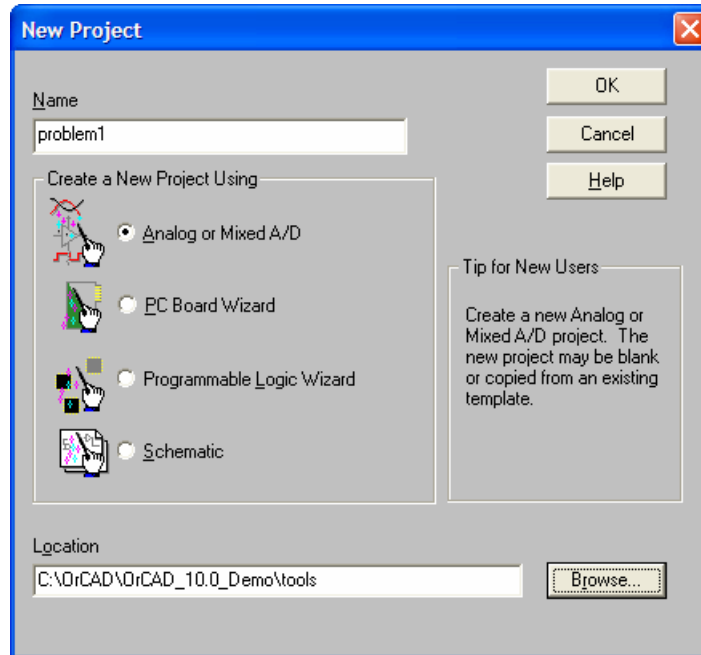
1. Opening Orcad –Click START button, locate the OrCAD 10.5 Demo in the program menu and open Capture CIS Demo as shown below



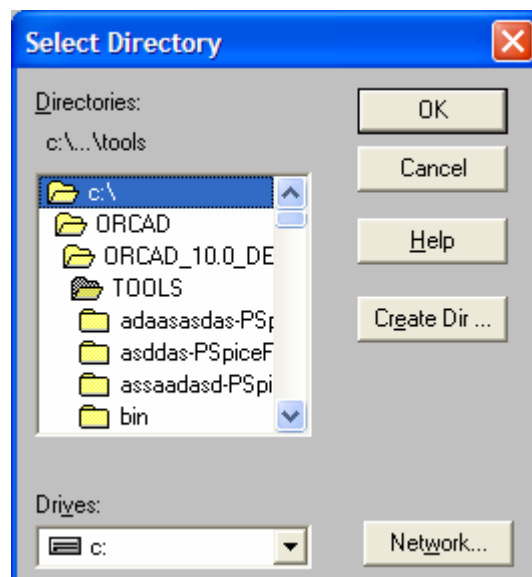
2. When the Capture CIS Demo Edition window opens
Click File→New→Project



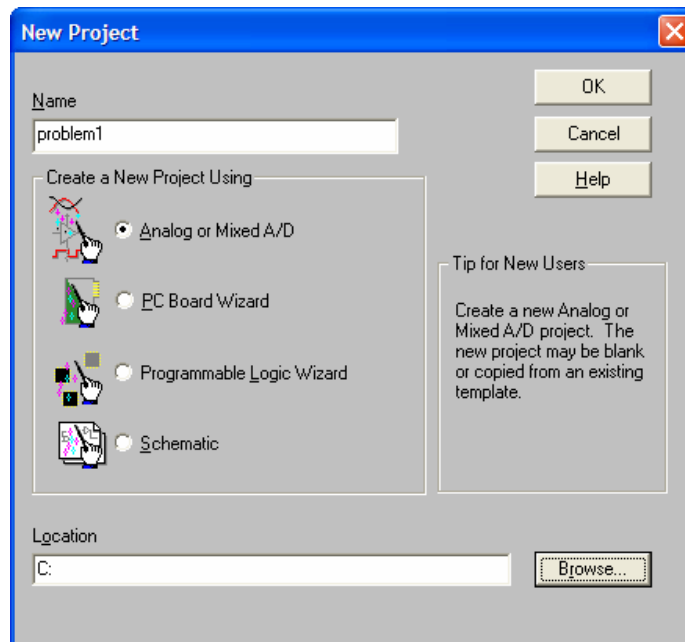
3. Give a Name to the project, select “Analog or Mixed A/D” option
Click Browse to select a location to save the project files



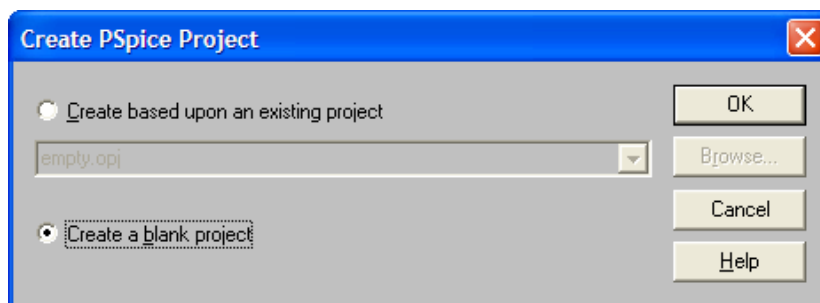
4. Select a location as shown below in the figure



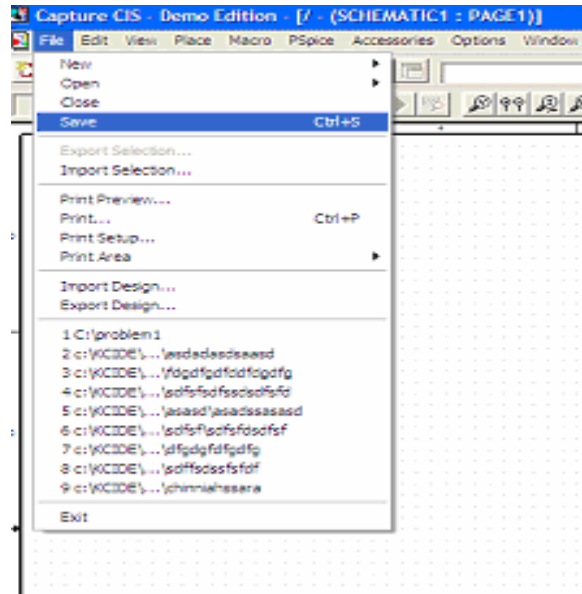
5. Click OK after selecting a Location



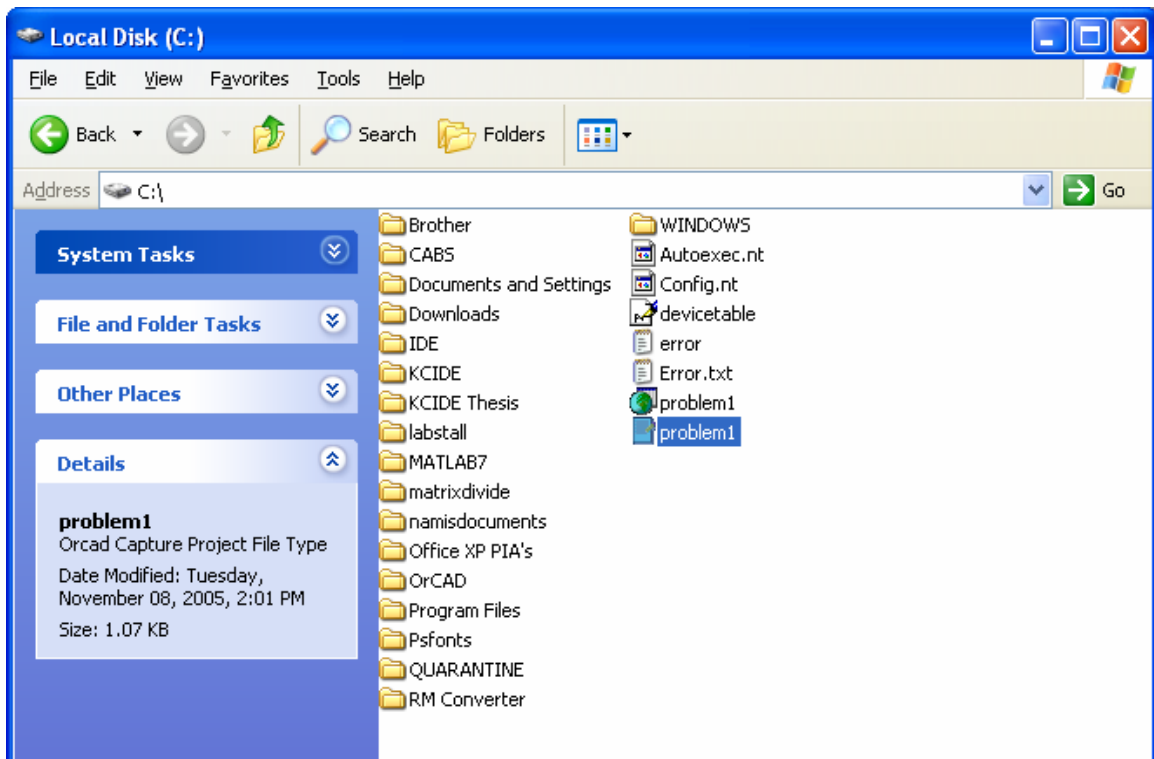
6. You will get a Message box like below, select “Create a blank project” option and click OK



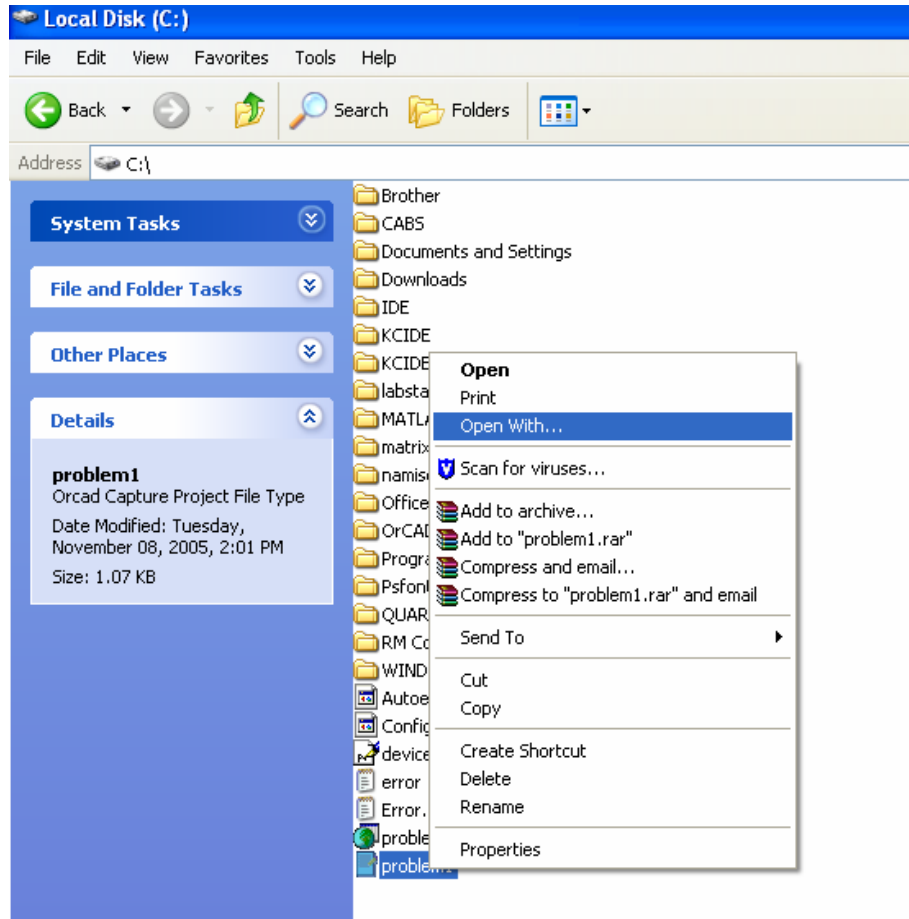
7. When the new project opens, click File→Save to save the project



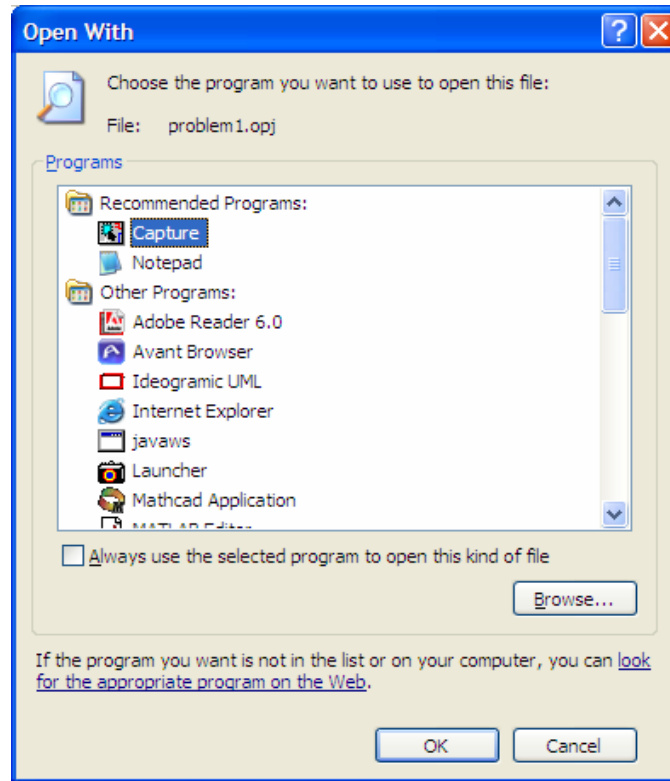
8. Open the Location of the project we saved in the previous step



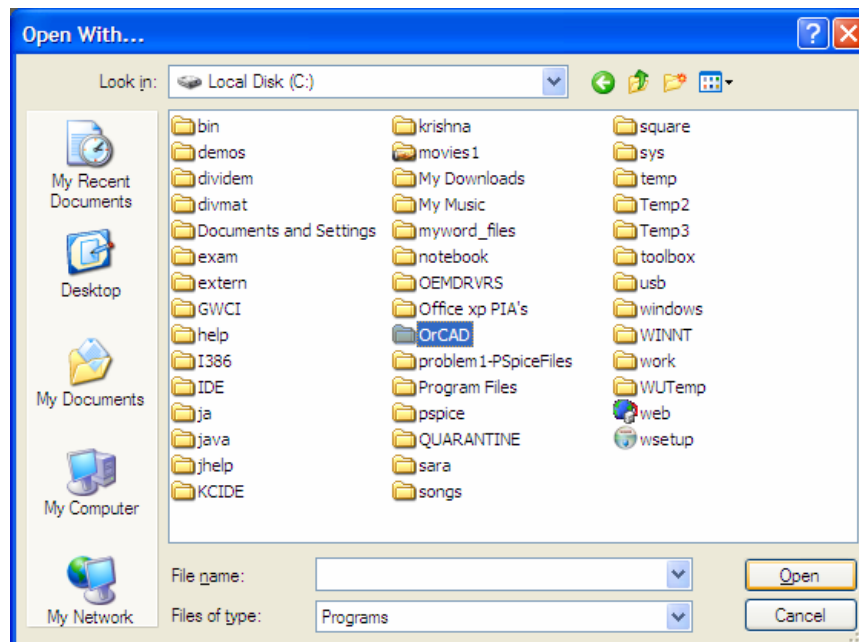
9. There will be two files created for the project, locate the file with the extension .opj and right click on it and chose Open With as shown below.



10. A new window opens as shown below asking for location of the Orcad Software
Click Browse in the window

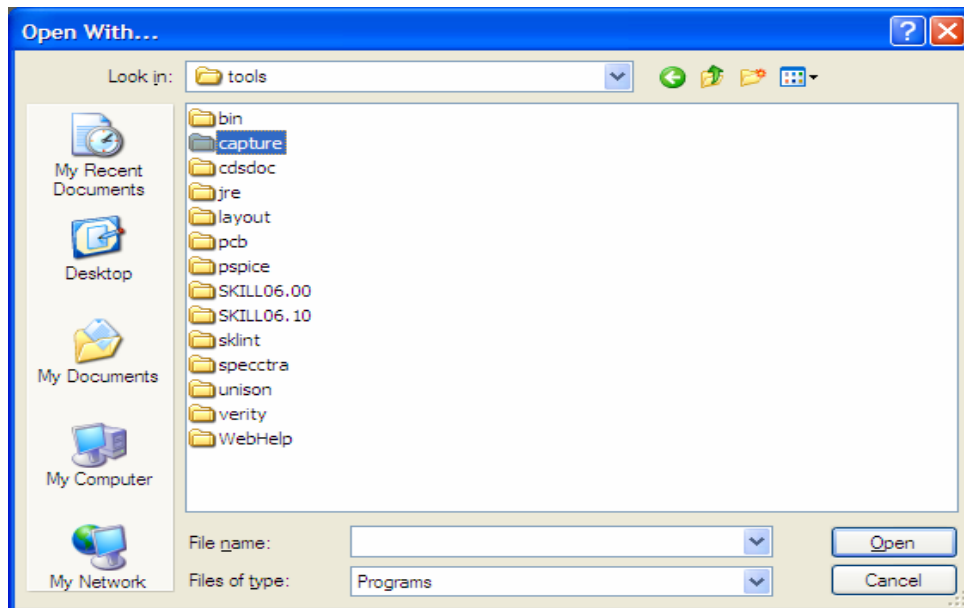


11. Locate the Installation Path of OrCAD.
The default location of the software is C:\OrCAD\OrCAD_10.5_Demo



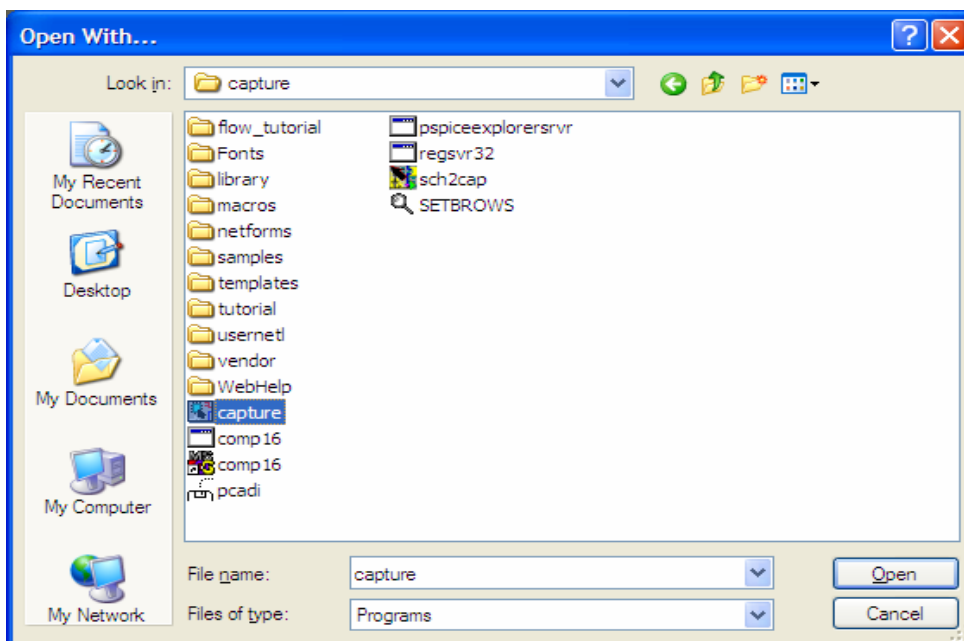
12. Browse for capture folder as shown below

The default hierarchy of location is C:\OrCAD\OrCAD_10.5_Demo\tools\capture

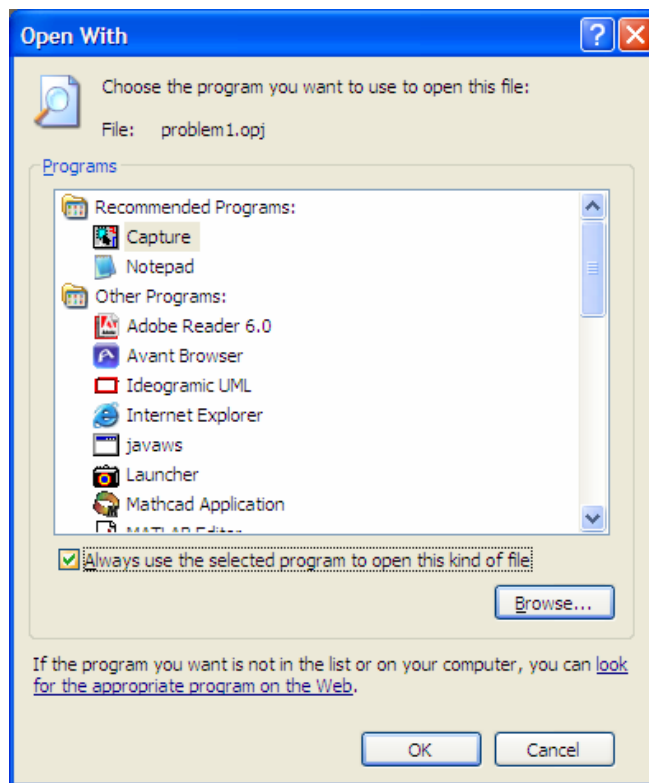


13. After opening the capture folder locate the exe called capture.exe

Click Open, which returns us to the previous window



14. In this window make sure that the checkbox which says “Always use the selected program to open this kind of file” is checked and click OK.



15. Double click the shortcut on desktop to open the KCIDE software.



Step 6: Install Solution Base

In the setup folder, copy the KCIDE subfolder to C: drive, i.e., its path should be C:\KCIDE.